

# Parks & Recreation



Parks Information Guide   



"Promoting Community Wellness"



# From the Superintendent

The Parks and Recreation Department is very excited to meet the growing needs of our community and will be embarking on an endeavor to enrich our facilities and programs for our residents. People are becoming more aware of the importance of parks and recreational green space. There is a greater interest in exploring these opportunities during valuable leisure time. Putting in place the most beneficial programs, activities, and facilities is very important to us as we evolve.

As area residents, you continue to show your pride in the community by giving your support and becoming involved. In the upcoming five-year master plan, we would like to invite you to participate in our public input sessions to promote individual interests and future community activities. This process is instrumental to collecting, analyzing, and ultimately setting our department's goals. Getting involved is a great start to elevating the City of Auburn as a unified community and allows our city to flourish.

Eric Ditmars

Auburn Parks and Recreation Superintendent

## Auburn Parks and Recreation Board

The Parks & Recreation Board oversees the policies and financial workings of Auburn Parks & Recreation. Board members are appointed by the Mayor to serve a four-year term. Current members can be viewed online at [ci.auburn.in.us](http://ci.auburn.in.us)

The Auburn Parks and Recreation Park Board meets on the fourth Tuesday of every month at 6:00 p.m. at the Rieke Lodge. All are welcome to attend.

# FAQ'S

## How to Reserve a Facility

Reserving one of our facilities has never been easier. Simply visit our community portal, [auburnin.recdesk.com](http://auburnin.recdesk.com), login to your account (creating an account is free and a one-time process) select your desired date at the facility you're interested in reserving. Reservations for all facilities are available on a calendar year basis and will open online January 1st at 7:30 a.m.

## Payment & Refund Policy

To reserve a facility, a down payment of \$20.00 is required within 5 business days of booking. The remaining amount will be due 30 days prior to your rental date. All rentals are subject to a 7% Indiana Sales Tax. At this time, check and exact cash are accepted forms of payment.

## Frequently Asked Questions

How far in advance can I reserve a Parks facility?

- One year in advance.

For how long can facilities be reserved?

- Facilities can be reserved from 9:00 a.m. – 9:00 p.m. Monday through Sunday.

Can I bring outside activities, structures or devices when renting a Parks facility?

- Additional items, such as a speaker system (DJ or otherwise), a bounce house or anything that draws a copious amount of power, must receive Park Board approval in advance. Call the Parks Department at (260) 925-2997 for information on how to obtain Park Board approval.

Is alcohol permitted at reserved facilities or parks?

- Alcohol is not permitted on park property.

How far in advance do I need to cancel a facility reservation to receive a refund?

- You may cancel a reservation 31 days or more prior to your reservation and receive a full refund. If you cancel your reservation within 30 days or less of your reservation, you will not be eligible for a refund. If you are interested in moving your date to another currently available slot, you are able to do that as well.



# Park Information



## Municipal Park Rules

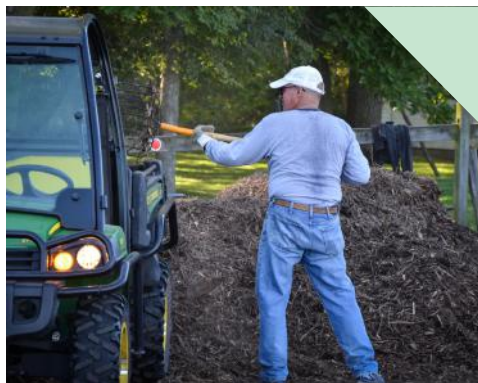
- All parks open at 7:00 a.m. and close at 9:00 p.m.
- No alcohol, smoking, vaping or drug use in the parks.
- Help keep our parks clean by using trash cans.
- All pets must be leashed at all times and cleaned up after.
- To report broken equipment, maintenance concerns or vandalism, please notify Auburn Parks & Recreation at (260) 925-2997.
- To report an emergency or illegal activity, notify law enforcement by calling (260) 920-3200 or 9-1-1.

## Volunteer with us!

The Auburn Parks & Recreation Department is constantly striving to meet the needs of the community. We recognize our volunteers are a crucial part to the success of our department! Contact our office at (260) 925-2997 to inquire about volunteer opportunities or join our Auburn Parks & Recreation Volunteer group on Facebook.

## Mission Statement

The Auburn Park & Recreation Department shall provide quality parks and facilities, open spaces, natural areas, educational opportunities and services which will enhance the well-being of the citizens of Auburn and surrounding areas.



## Safety in the Parks

Due to COVID-19, please follow the below rules to help keep everyone in our parks safe:

- Keep 6 feet away from others
- Masks are required when social distancing is not achievable



# Facility Rentals

## Rieke Park Lodge

1600 N. Indiana Avenue

Rieke Park Lodge is a popular location for family reunions, birthday and graduation parties, as well as organizational and business meetings. The Rieke Park Lodge has a full-sized fridge, microwave, large serving counter with several outlets available for use, a fireplace, sound system, and bathrooms. 11, 6-foot round tables and chairs included, seats 70.

Reservation Fees:

- Weekdays, Monday through Friday
  - \$30/hour (2 hour min)
- Weekends and Holidays
  - \$175 (9:00 a.m. - 9:00 p.m.)

## Eckhart Enclosed Pavilion

1500 S. Cedar Street

The Eckhart Enclosed Pavilion is in the back of Eckhart Park and near a playground as well as walking trail.

The Eckhart Enclosed Pavilion has electricity and cafeteria style tables available for use. Seats 300. Bathroom facilities are available in the park from April 15th through October 15th, weather permitting.

Reservation Fees:

- Monday through Sunday
  - \$80.00 (9:00 a.m. - 9:00 p.m.)

## Open Air Pavilion Locations

Rieke North and South

1800 N. Indiana Avenue

North Pavilion seats approximately 48.

South Pavilion seats approximately 96.

Memorial Park

604 Hazel Street

Seats approximately 96.

Reservation Fees: \$45 (9:00 a.m. - 9:00 p.m.)



# Parks & Amenities

## Community Parks

### Eckhart Park

1500 South Cedar Street

Originally developed in 1915, Eckhart Park was Auburn's first and oldest park. Eckhart Park houses the Auburn Parks and Recreation office.

Community members can enjoy two walking paths, handicap accessible swings, a playground set, a disc golf course, two open air shelters, an enclosed pavilion, picnic tables, benches, restrooms and drinking fountains.



### Rieke Park

1800 North Indiana Avenue

A 63 acre park north of Auburn. Local residents, Glen and Thelma Rieke donated land to be used solely for parks and recreation uses. The park includes four baseball diamonds, four softball fields, two concession stands, two open air pavilions, a large playground area, swing set, restrooms, walking paths, a large pond with a newly installed fishing pier and the Rieke Lodge.



### Eckhart Park Skate Park

1500 South Cedar Street

The newest park to Auburn is the Skate Park located in Eckhart Park. This facility offers a wide variety of features including a 3 pocket pool, alien bowl, and long street area with multiple elevations. This park brings in community members of all ages to enjoy their love for skating. For park rules please visit [auburnin.recdesk.com](http://auburnin.recdesk.com).



### Smith Acres

800 South Duesenberg Drive

This large park serves as both a neighborhood and a community park. The 10 acre facility is located in the eastern portion of Auburn and offers a variety of recreational opportunities including: two softball diamonds, a full sized basketball court, picnic tables, a sledding hill, two tennis courts, two pavilions, benches, a playground and swing set.



## Neighborhood Parks

### Auburn Gear Park

Auburn Drive (11.693 Acres). This is an undeveloped park with large open grassy area used for open field practices.

### Courtyard Park

102 South Cedar Street

This small (0.08 acres) urban space offers shoppers, downtown employees and visitors with a place to take a break. Benches, flowers and a waterfall add an inviting appeal to downtown.

### Desoto Park

114 South Baxter Street

This neighborhood park offers local residents nearly an acre of space to picnic, play or gather. The park is located in the eastern portion of Auburn. The site has a full sized basketball court, swing set, playground set, and two benches to sit and relax on.

### Don Lash Park

2005 Portage Pass

This 15-acre park includes a playground set, swing set, benches and a hiking trail into a wooded area.

### Forrest Park

1609 Park Street

This neighborhood park offers local residents an opportunity to enjoy a small open space area that has playground equipment, picnic tables and benches. The three-acre park is located in the southwest area of Auburn.

### Memorial Park

604 Hazel Street

This multi-purpose 12.1 acre park is located in the southwest quadrant of the City and serves as both a neighborhood park and a community-wide resource. The park includes two full sized baseball/softball diamonds, full sized basketball court, a playground set, benches, a swing set, a large open air pavilion and a football/soccer field.

### Riley Park

220 North Van Buren Street

This neighborhood park occupies less than an acre in the City's north side. The park has a small pavilion, a shuffleboard court, a pirate ship playground and swing set and half-court basketball.

### Thomas Park

720 North Union Street

Home to Auburn's only dog park, this six-acre park serves as both a neighborhood and community park. The park is located in the northern part of Auburn and provides a variety of facilities including: two tennis courts, a full sized basketball court, youth baseball diamond, a dog park, restroom facilities, playground area and swing set, picnic tables and benches.

### Willennar Park

1200 Elm Street

This 1.68 acre park in the southeast area of Auburn is a partially fenced in open grassy area with a swing set.

## Trails & Pathways

Auburn Parks & Recreation offers the community a variety of trails and pathways for walking, jogging, biking and more. Newly installed way finding signs make navigating the extensive trail system user friendly. To learn more about our trail system, visit [www.ci.auburn.in.us](http://www.ci.auburn.in.us) and download our trail guide.



## We want to hear from you!

Call Us: (260) 925-2997

Email Us: [parks@ci.auburn.in.us](mailto:parks@ci.auburn.in.us)

Website: [auburnin.recdesk.com](http://auburnin.recdesk.com)

Visit Us: 1500 South Cedar Street

Office Hours

7:30 a.m. - 3:30 p.m. Monday - Friday

Stay updated on all Parks events by visiting the City of Auburn Indiana Government Facebook page.